

Heavy-Duty Inground Lifts



Model#: CS1220
Heavy-Duty Inground Lift
12,000 lb. lifting capacity

Challenger Lifts Heavy-Duty Inground Lifts are ideal for starting or expanding your commercial fleet service capabilities.

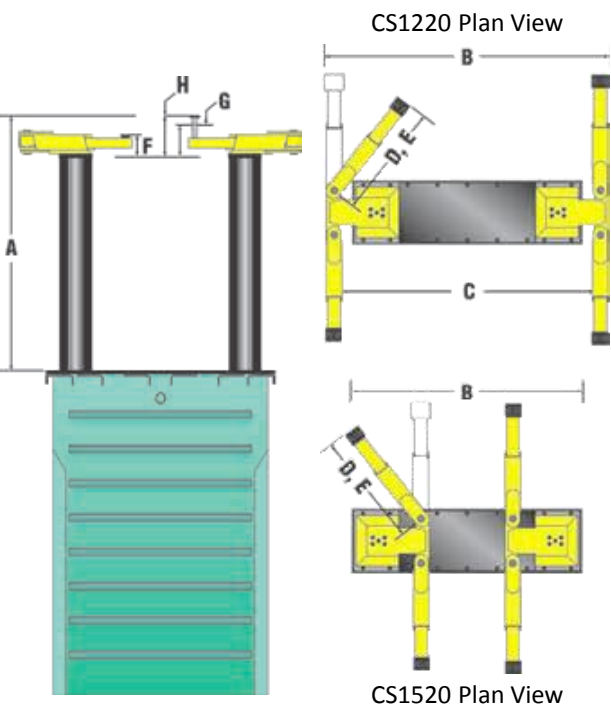
Heavy-Duty Inground Lifts require less shop space than surface mounted lifts, maximizing the number of service bays.

The CS1220 is equipped with standard, medium and high extension stack adapters to accommodate a wide variety of Heavy-Duty vehicle pick up points.

Challenger Heavy-Duty Inground Lifts are fully contained in a recycled polymer housing to protect your investment and the environment.

Challenger is the exclusive manufacturer of the only 15,000 lb. capacity inground lift in the market. The CS1520 Heavy-Duty arms are engineered to lift heavier commercial vehicles.

Standard features:



Model Number	CS1220	CS1520
Lifting Capacity	12,000 lb.	15,000 lb.
A Rise Height	81"	84 1/4"
Stroke	68"	
B Width Overall	99"	71 1/2"
C Drive-Thru Clearance	87"	NA
D Reach (Arm Minimum)	32"	26 1/4"
E Reach (Arm Maximum)	49 1/4"	43"
F Adj. Adapter Height	5 3/8" - 7"	6 1/2" - 8 1/4"
G Adj. Adapter Height (with Medium Extensions)	8 3/8" - 10"	10 1/2" - 12 1/4"
H Adj. Adapter Height (with High Extensions)	11 3/8" - 13"	14 1/2" - 16 1/4"
Capacity (per arm)	3,000 lb.	3,750 lb.
Motor	2HP	
Voltage (1 Phase Std.)	208v-230v	
Speed of Rise	65 Sec.	80 Sec.
Air Required	75-125 psi	

Call 918-258-8492 to place your Order Today!